

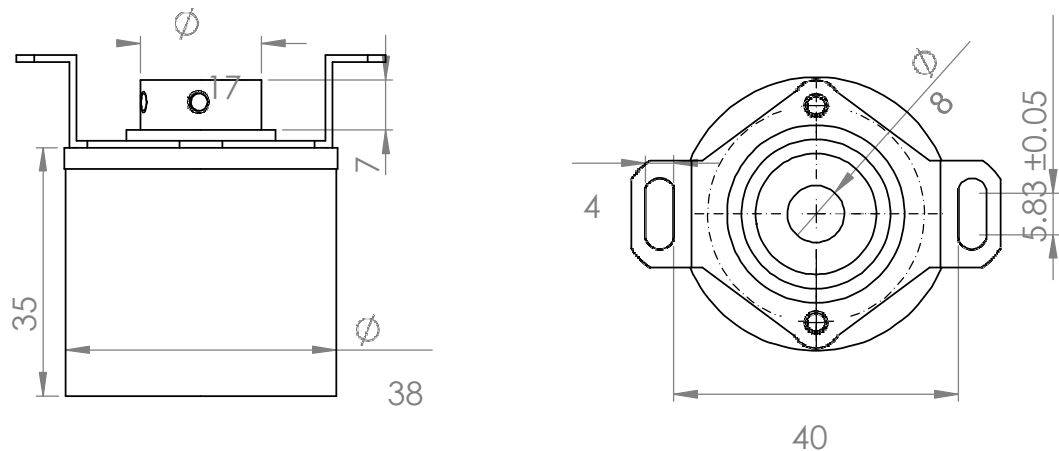
- **Rotary Quadrature Encoder 1000PPR/4000CPR with Index**

General Specifications		Electrical Specifications	
Output Diameter (mm)	38	Working Voltage(v)	5
Shaft Type	Hollow Bore Shaft	Working Current(mA)	40
Shaft Diameter	8	Output Signal	Push-Pull/Open-collector
Phase	A, B, Z	Frequency (KHz)	300
Operational Temperature(c)	-30 to 85	Max RPM	6000
Protection Degree	IP 54	Weight (gms)	180

- **Power and Input Terminal Assignment**

Terminal No	Terminal Name	Wire Colour	Description
Terminal 1	VCC	Red	Vcc Should Be Connected To +5v
Terminal 2	GND	White	Gnd Should Be Connected To Negative Of Supply
Terminal 3	Enc A	Black	Quadrature Encoded Output A
Terminal 4	Enc B	Green	Quadrature Encoded Output B
Terminal 5	Index Z	Yellow	Index Output Z

- **Dimension (Unit mm)**



All Dimensions are in mm	
Rhino Motion Controls	RMCS - 5102